



LARGE CARNIVORES: UMBRELLA SPECIES FOR FOSTERING BIODIVERSITY AND CONNECTIVITY IN EUSAIR REGION & EUROPE

5th Annual EUSAIR Forum

28-29 January 2021 Belgrade, Serbia

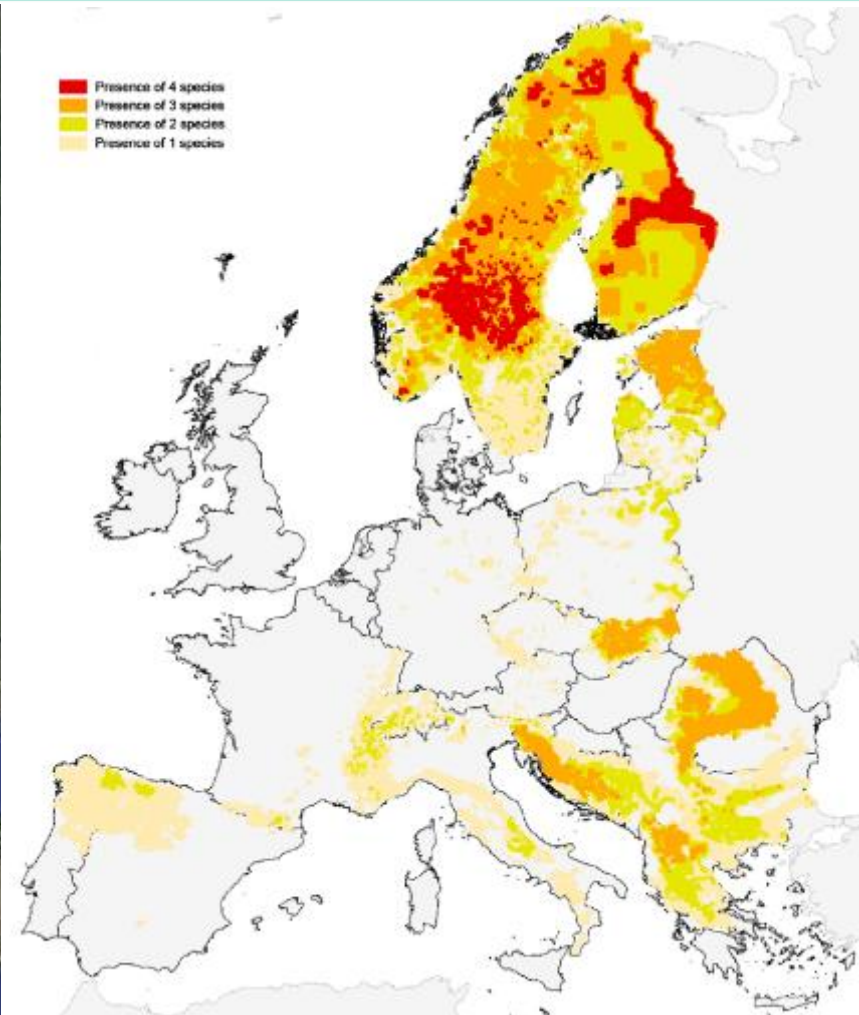
prof. Klemen Jerina
University of Ljubljana, Biotechnical
Faculty, Slovenia
klemen.jerina@bf.uni-lj.si

Europe at night
not much place left for biodiversity, including LC!



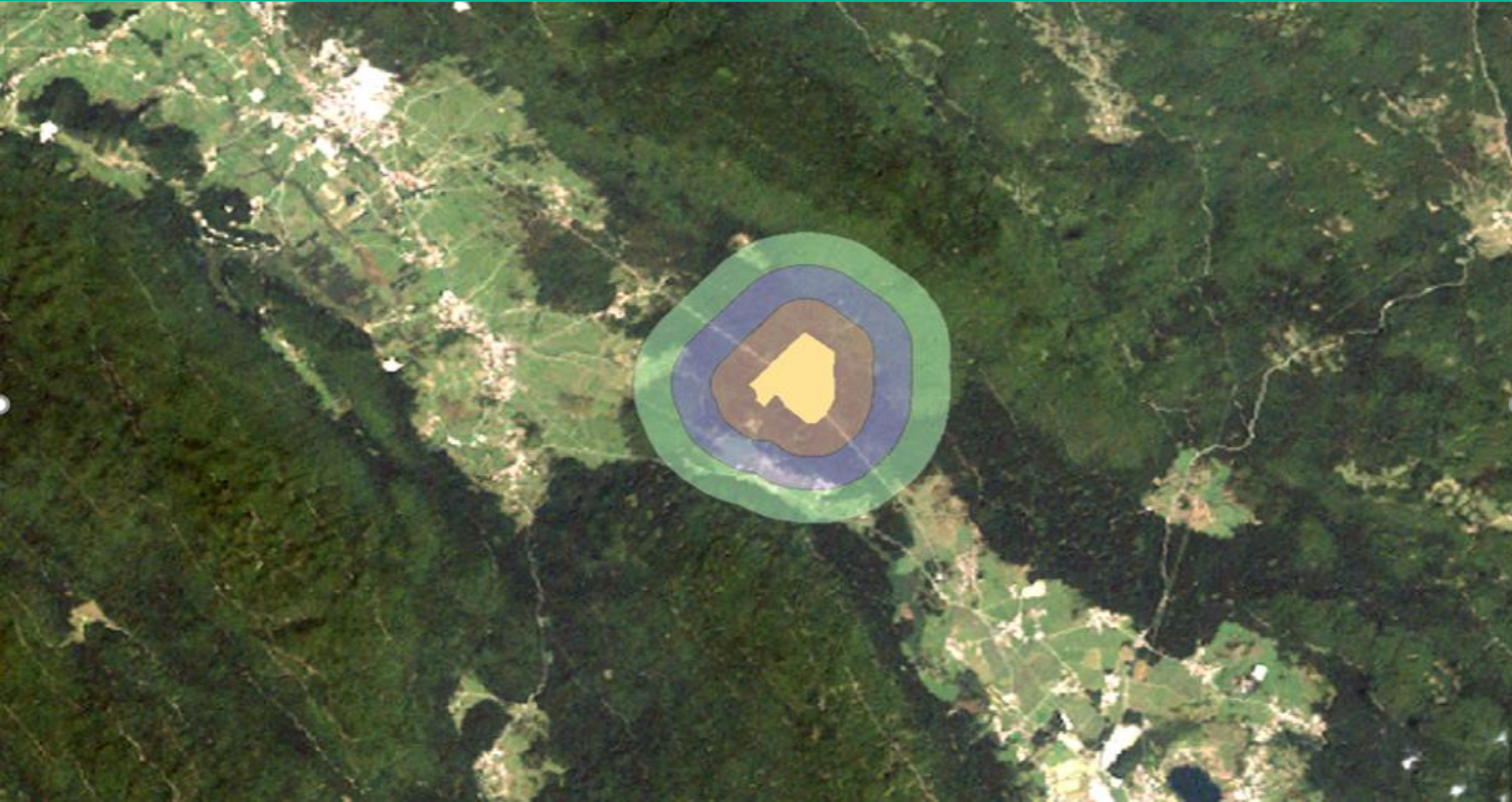
EUSAIR region as one of key biodiversity hotspots

e.g >10 populations of wolf, lynx and brown bear



Map and figure: Chapron et al., 2014: Recovery of large carnivores in Europe's modern human-dominated landscapes

Functional fragmentation and habitat degradation is one of key threats of LC, and loss of biodiversity!
Occurring at several scales and due to different causes:



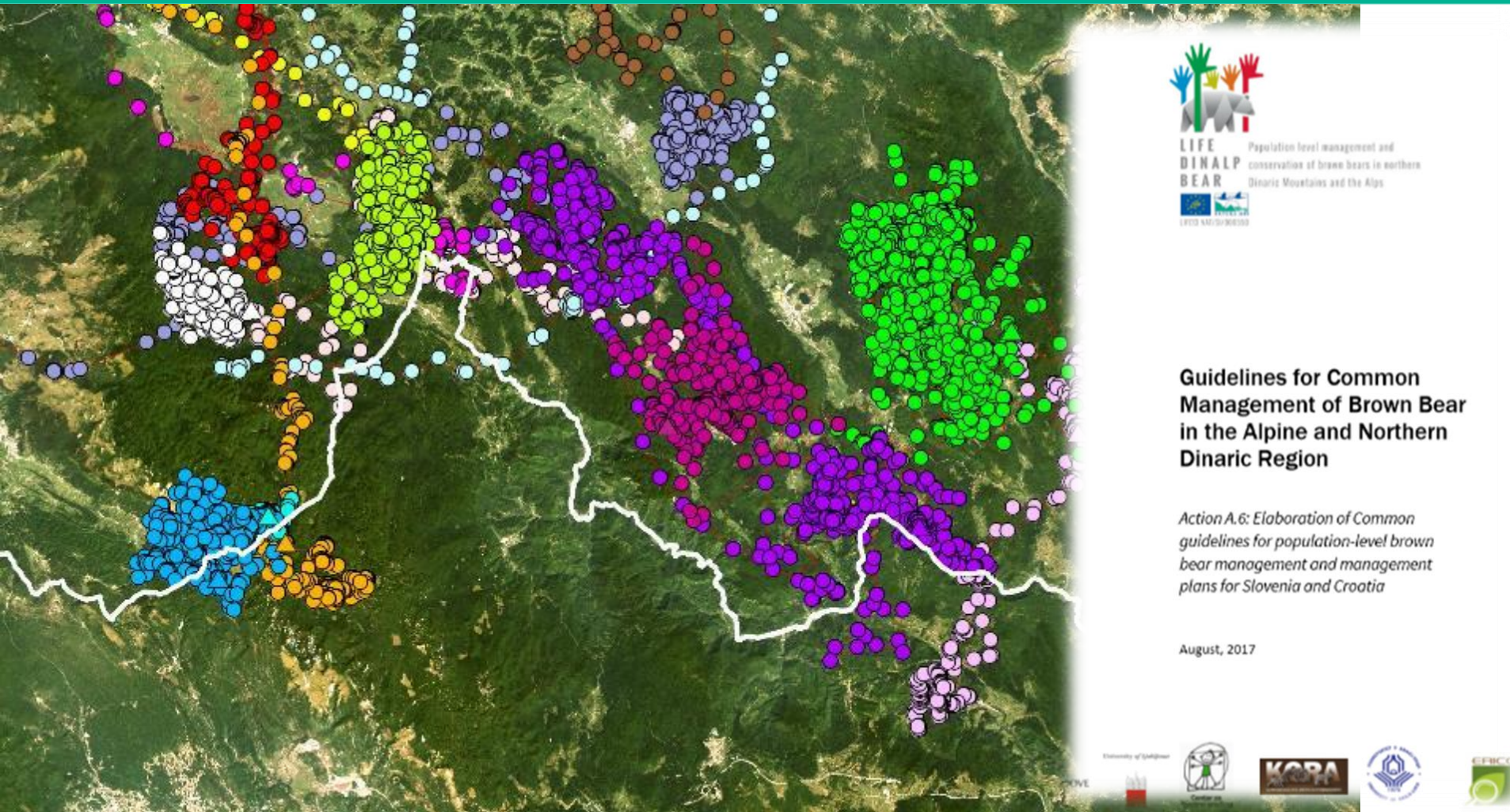
Degradation and loss of natural habitat due to urbanization and agriculture

Functional fragmentation and habitat degradation is one of key threats of LC, and loss of biodiversity!
Occurring at several scales and due to different causes:



Degradation and loss of natural habitat due to infrastructure & energetics

Functional fragmentation and habitat degradation is one of key threats of LC, and loss of biodiversity!
Occurring at several scales and due to different causes:



NON- harmonized management between countries/management units.

Functional fragmentation and habitat degradation is one of key threats of LC, and loss of biodiversity!
Occurring at several scales and due to different causes:



Conflicts with people

Functional fragmentation and habitat degradation is one of key threats of LC, and loss of biodiversity!
Occurring at several scales and due to different causes:



Conflicts between groups of people, arrogant up down approach, poor communication, non acceptance of species, administrative overprotection of species!

Strategic plan for conservation of LC & planning of green infrastructure for the improvement for natural habitats and terrestrial ecosystems (W in progress).



NUMEROUS local, national and population level project in EU, also partially in ADRION area, e.g. Slovenia:

Ohranitev velikih zveri v Sloveniji – Faza I (rjavi medved), Life Coop III SloWolf, Dinaris, LifeDinAlpBear, BearConnect, Life Lynx, Carnivora Dinarica, Alpine-space

- LEARNED LESSONS!
- KEEP GOOD PRACTICES & CAPACITIES!
- ADAPTATION, RESPECTFULL IMPLEMENTATION!

Strategic plan for conservation of LC & planning of green infrastructure for the improvement for natural habitats and terrestrial ecosystems (W in progress) MAIN TOPICS:



1. Capacity building (specific experience and knowledge transfer activities to support conservation at national and regional levels)

Strategic plan for conservation of LC & planning of green infrastructure for the improvement for natural habitats and terrestrial ecosystems (W in progress) MAIN TOPICS:



2. Communication
 - a. Target groups: general public, national management authorities, local authorities, key stakeholders (hunters, farmers, environmental NGOs), education/academic bodies.
 - b. Stakeholder and expert forums
 - c. Webpage and other online communication tools
 - d. Communication action plan
 - e. Events
 - f. Publications

Strategic plan for conservation of LC & planning of green infrastructure for the improvement for natural habitats and terrestrial ecosystems (W in progress) MAIN TOPICS:



3. Governance & legislation
 - a. At national level (management plans, policies...)
 - b. Regional collaboration
 - c. Adaptation of legislation (up-bottom, & bottom-up, i.e. annex iv, and v issue!)

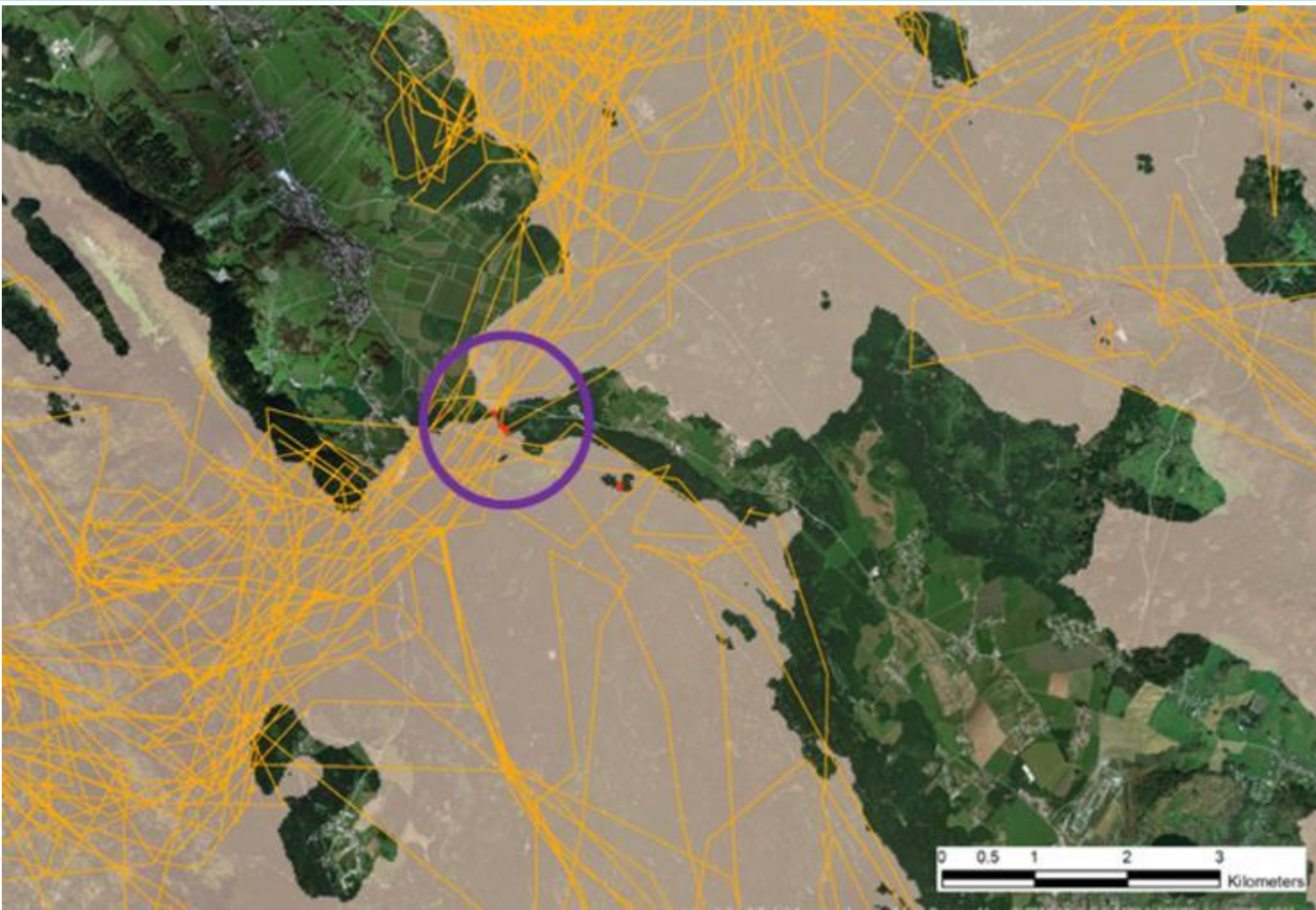
Strategic plan for conservation of LC & planning of green infrastructure for the improvement for natural habitats and terrestrial ecosystems (W in progress) MAIN TOPICS:



4. Coexistence:
 - . Demonstration of best practice for damage / human-wildlife conflict prevention



Strategic plan for conservation of LC & planning of green infrastructure for the improvement for natural habitats and terrestrial ecosystems (W in progress) **MAIN TOPICS:**



5. Connectivity & habitat conservation!
 - a. Identification of connectivity hotspots (transnational assessment) + guidelines
 - b. Raising awareness about the issue
 - c. Intersectoral cooperation (e.g energetics, infrastructure, agriculture)!

Strategic plan for conservation of LC & planning of green infrastructure for the improvement for natural habitats and terrestrial ecosystems (W in progress) **MAIN TOPICS:**



6. Population monitoring
 - a. Improvement and harmonization of approaches
 - b. Joint data-sharing platform(s)
 - c. Collaboration and networking among experts

Strategic plan for conservation of LC & planning of green infrastructure for the improvement for natural habitats and terrestrial ecosystems (W in progress) **MAIN TOPICS:**



- . Partnership - public bodies (and other entities) involved in large carnivore management and large scale spatial planning

Hvala!
Thank You!

The background features abstract geometric shapes. A large blue shape is in the bottom-left corner. A large red shape is in the bottom-right corner. An orange shape is in the top-right corner. A yellow shape is in the bottom-right corner, partially overlapping the red shape. The top-left corner is white.